

## **The Joanna Briggs Institute – an introduction**

Cindy Stern BHSc (Hons) PhD Candidate, Collaboration Liaison Officer, The Joanna Briggs Institute

The Joanna Briggs Institute (JBI) is an international, not-for-profit, membership based research and development organisation within the Faculty of Health Sciences at the University of Adelaide located in Adelaide, South Australia. Established in 1996, the JBI is now a growing, dynamic international collaboration involving nursing, medical and allied health researchers, clinicians, academics and quality managers across 90 countries in every continent.

The Institute collaborates internationally with 60 entities (including centres and other groups) located across the world, including Australia, Botswana, Cameroon, Canada, China, Ethiopia, England, Ghana, Hong Kong, Kenya, Korea, Malawi, Myanmar, Nigeria, Philippines, Romania, Rwanda, Scotland, Singapore, South Africa, Spain, Taiwan, Tanzania, Thailand, Uganda, USA, and Wales. The Institute and its collaborating entities and groups promote and support the synthesis, transfer and utilisation of evidence through identifying feasible, appropriate, meaningful and effective health care practices to assist in the improvement of health care outcomes globally.

The needs of health professionals and consumers across the world drive and influence the work undertaken by JBI and the resources we develop. There are a variety of ways that you can become involved with the activities of the Institute and access our diverse range of resources. Regardless of whether your interests are related to developing evidence-based information, disseminating that information to staff to use or accessing evidence-based information, there is a JBI resource that can assist you with that process.

### **The JBI approach**

The JBI approach to evidence-based healthcare is unique. It considers evidence-based healthcare to be reliant on the research evidence, the context in which care is delivered, individual client preference and the professional judgment of the health professional.

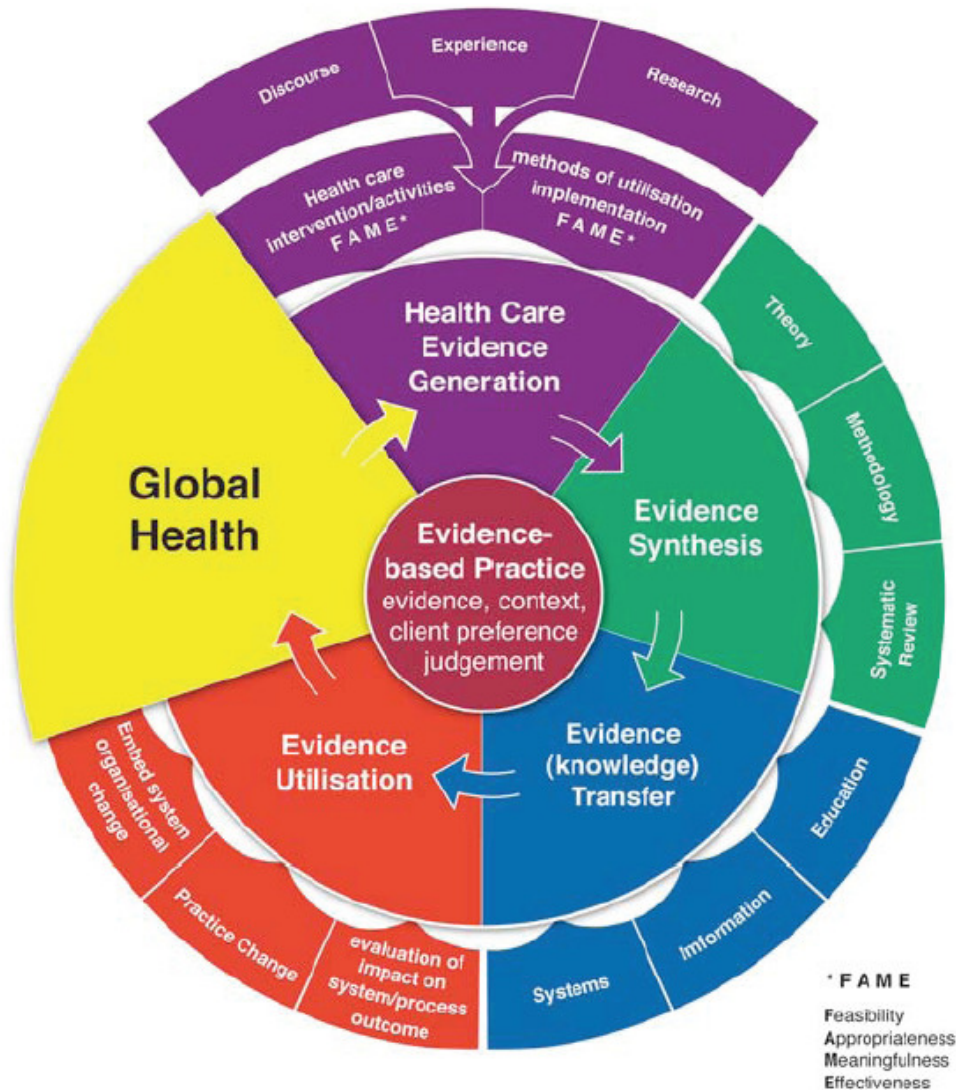
JBI regards evidence-based healthcare as a cyclical process (see model below). Global healthcare needs, as identified by health professionals or patients/consumers, are addressed through the generation of research evidence that is effective, but also appropriate, feasible and meaningful to specific populations, cultures and settings. This evidence is collated and the results are appraised, synthesized and transferred to service delivery settings and health professionals who utilize it and evaluate its impact on health outcomes, health systems and professional practice.

Therefore, in order to provide those who work in and use health systems globally with world class information and resources, JBI:

- Considers international evidence related to feasibility, appropriateness, meaningfulness as well as effectiveness (evidence generation)
- Includes these different forms of evidence in a formal assessment called a

systematic review (evidence synthesis)

- Globally disseminates information in appropriate, relevant formats to inform health systems, health professionals and consumers (evidence transfer)
- Has designed programs to enable the effective implementation of evidence and the evaluation of its impact on healthcare practice (evidence utilization)



Pearson A, Wiechula R, Court A and Lockwood C. 2005.  
 The JBI model of evidence-based healthcare  
*Int J Evid Based Healthc* 3(8):207-215.

## JBI Resources and Tools

Evidence-based healthcare relates to all the health professions - medicine, nursing and allied health - as well as health policy makers, planners and executives. As a JBI member you have access a wide range of resources and tools to access, appraise, and use evidence-based information via our exclusive on-line web facility, JBI CO<sup>N</sup>NECT+ (Clinical Online Network of Evidence for Care and Therapeutics).

JBI CO<sup>N</sup>NECT+ (<http://connect.jbiconnectplus.org/>) contains the following resources:

## Access

Search a wide range of databases in one central location to find evidence to inform your practice. You can access summarised research in a format that is easy to locate, understand and distribute to others or single research papers.

### *Resources available:*

- JBI databases (including the JBI Library of Systematic Reviews, Best Practice Information sheet, evidence summaries and recommended practices)
- External databases (including the Cochrane Library, Evidence Matters)

## Appraise

Find resources designed to help you assess the quality of single research papers. Learn to pose relevant questions about the feasibility, appropriateness, meaningfulness and effectiveness of an intervention or professional activity.

### *Resources available:*

- Critical appraisal (RAPid)

## Use

Find resources designed to help you to develop organisational policy and practice manuals based on the best available evidence and programs to evaluate the effectiveness of those systems.

### *Resources available:*

- Practice manuals (JBI Evidence Manual builder)
- Consumer Pamphlets (Consumer Pamphlet builder)
- Clinical audit (PACES)
- Prevalence data (POOL/COOL)

The JBI also provides education and training and hosts a number of events each year. For further information visit the website at <http://www.joannabriggs.edu.au> or email [jbi@adelaide.edu.au](mailto:jbi@adelaide.edu.au)