

14 - Bilag 7: Søgebeskrivelse

Litteratursøgning til denne kliniske retningslinje er foretaget i henhold til Metodehåndbogen for udarbejdelse af Nationale Kliniske Retningslinjer for puljeprosjekter 2017-2020. Databaserne er udvalgt efter retningslinjerne i metodehåndbogen.

De systematiske søgninger er foretaget i tre trin:

1. Søgning efter kliniske retningslinjer og guidelines
2. Søgning efter anden sekundær og primærlitteratur (systematiske reviews, metaanalyser, RCT'ere og observationelle studier)
3. En opdateret søgning specielt på PICO 5 efter sekundær og primærlitteratur (systematiske reviews, metaanalyser, RCT'ere og observationelle studier)

Alle søgninger er foretaget af søgespecialist Conni Skrubbeltrang i samarbejde med metodekonsulenterne Sasja Jul Håkonsen og Preben Ulrich Pedersen i perioden 28. maj 2018 til 6. december 2018.

Søgeprotokollerne med søgestrategier for de enkelte baser tilgængelige her

Litteraturen fundet ved søgning er suppleret med kendt litteratur fra andre kilder.

Generelle søgetermer

Engelske: brain injury, brain trauma, craniocerebral, cerebrovascular, nutrition, nutritional

Danske: Hjerneskade ernæring

Norske: hjerneskade, hjerneslag, ernæring

Svenske: Hjärnskador näring

For de opfølgende søgninger er der søgt med individuelle søgetermer for hvert PICO-spørgsmål, og de nærmere detaljer fremgår af søgeprotokollerne.

Generelle søgekriterier

Publikationsår: 2008 – 2018

Sprog: Engelsk, dansk, norsk og svensk

Dokumenttyper: Guidelines, clinical guidelines, practical guidelines, MTV, systematiske reviews, metaanalyser, RCT og observationelle studier.

Søgning efter guidelines

Den systematiske søgning efter kliniske retningslinjer, guidelines og MTV er foretaget i perioden 28. maj til 31. maj 2018 i følgende informationskilder: Guidelines International Network (G-I-N), NICE (UK), National Guideline Clearinghouse (USA), Scottish Intercollegiate Guidelines Network (SIGN), CRD/HTA database, SBU (Sverige), Socialstyrelsen (Sverige), Helsedirektoratet (Norge), Kunnskapssenteret (Norge), Netpunkt (Danmark) samt PubMed, Embase og Cinahl.

Søgning efter anden sekundær litteratur og primærlitteratur

De opfølgende søgninger efter systematiske reviews, meta-analyser, RCT'ere og observationelle studier er foretaget i perioden 31. maj til 26. juni 2018.

Der er udarbejdet individuelle søgestrategier for hvert enkelt PICO-spørgsmål og søgt i databaserne PubMed, Embase, Cinahl, Cochrane Library og PsycINFO. Resultater fremgår af søgeprotokollerne.

Opdateret søgning specielt på PICO 5

Efter gennemgang af referencerne er søgehistorien til PICO blevet tilføjet nye søgeord og en opdateret søgning er foretaget d. 6. og 7. december 2018.

Conni Skrubbeltrang

Medicinsk Bibliotek, Aalborg Universitetshospital

18. januar 2019

Søgeprotokoller

Søgeprotokol Guidelines NKR P7: Ernæring til patienter med akut erhvervet hjerneskade

Projekttitel/aspekt	Ernæringsbehandling til voksne patienter med svær erhvervet hjerneskade Guidelines og Cochrane Reviews
Kontakt projektgruppe	Preben Ulrich Pedersen
Kontakt søgespecialist	Conni Skrubbeltrang cs@rn.dk

Søgetermer	Engelske: brain injury, brain trauma, craniocerebral cerebrovascular and nutrition. Danske:
------------	--

	Norske: hjerneskade ernæring hjerneslag Svenske: Hjärnskador näring*
Inklusions- og eksklusionskriterier	Sprog: Engelsk, dansk, norsk og svensk År: de sidste 10 år, (2008-2018) Population: Publikationstyper:

Informationskilder

Databaser	Interface	Fund	Dato for søgning
G-I-N International	http://www.g-i-n.net/	1	28.05.2018
NICE (UK)	http://www.nice.org.uk/	5	28.05.2018
National Guideline Clearinghouse (USA)	http://www.guideline.gov/	6	28.05.2018
Scottish Intercollegiate Guidelines Network (SIGN)	http://www.sign.ac.uk/#	2	28.05.2018
HTA Databasen (CRD database)	http://www.crd.york.ac.uk/CRDWeb/	0	29.05.2018
SBU, Sverige	http://www.sbu.se/sv/	4	29.05.2018
Socialstyrelsen, Sverige	http://www.socialstyrelsen.se/riktlinjer/nationellariktlinjer	6	29.05.2018
Helsedirektoratet, Norge	https://helsedirektoratet.no/retningslinjer	1	29.05.2018
Kunnskapscenteret, Norge	http://www.kunnskapscenteret.no/	5	31.05.2018

PubMed	https://www.ncbi.nlm.nih.gov/pubmed/advanced	84	28.05.2018
EMBASE	https://www.embase.com/	174	29.05.2018
CINAHL	EBSCO	39	29.05.2018
Cochrane		49	29.05.2018

Note:

- Søgetermer og inklusions- og eksklusionskriterier er tilpasset de enkelte databaser.

Søgestrategi

G-I-N International

Søgning	Resultat	kommentar
Brain injury AND nutrition	1	
Brain trauma AND nutrition	Ingen nye fund	
Cerebrovascular AND nutrition	1	1 tysk og 1 withdrawn ikke lagt ind
Cranioerebral AND nutrion	0	
Stroke AND nutrition	0	

NICE (UK)

Søgning	Resultat	kommentar
Brain injury AND nutrition	2	
Brain trauma AND nutrition	Ingen ny fund	
Cerebrovascular AND nutrition	Ingen relevante fund	
Stroke and nutrition	3	

National Guideline Clearinghouse (USA)

Søgning	Resultat	kommentar
Brain injury AND nutrition	5 måske relevante	
Brain trauma AND nutrition	Ingen nye fund	
Cerebrovascular AND nutrition	0	
Stroke AND Nutrition	1 nyt fund	

Scottish Intercollegiate Guidelines Network (SIGN)

Listen over guidelines gennemgået 2 relevante fund.

HTA Databasen (CRD database)

Søgning	Resultat	kommentar
Brain injur* AND nutrition*	0	
Brain trauma* AND nutrition*	0	
Craniocerebral AND nutrition*	0	
Stroke and nutrition*	0	

SBU, Sverige

Søgning	Resultat	kommentar
Hjärnskad näring	3	
Stroke näring	1 nyt fund	

Socialstyrelsen, Sverige

Gennemgang af listen med Nationale Riktlinjer 6 fund

Helsedirektoratet, Norge

Søgning	Resultat	kommentar
Hjerne* ernæring	1	
Hjerneslag ernæring	0 nye fund	

PubMed

Search	Add to builder	Query	Items found
#21	Add	<p>((((((((((head[Text Word] OR crania*[Text Word] OR cranio*[Text Word] OR cerebr*[Text Word] OR capitis[Text Word] OR brain*[Text Word] OR forebrain*[Text Word] OR skull*[Text Word] OR hemispher*[Text Word] OR intra-cran*[Text Word] OR inter-cran*[Text Word]))) AND ((injur*[Title/Abstract] OR trauma*[Title/Abstract] OR lesion*[Title/Abstract] OR damag*[Title/Abstract] OR wound*[Title/Abstract] OR destruction*[Title/Abstract] OR oedema*[Title/Abstract] OR edema*[Title/Abstract] OR fracture*[Title/Abstract] OR contusion*[Title/Abstract] OR concus*[Title/Abstract] OR commotion*[Title/Abstract] OR pressur*[Title/Abstract]))) OR (((((((((apoplexy[tw] OR stroke[tiab] OR Diffuse axonal injur*[tiab] OR "Unconsciousness"[Mesh] OR "Glasgow Outcome Scale"[Mesh] OR "Glasgow Coma Scale"[Mesh] OR "Brain Edema"[Mesh] OR "Cerebrovascular Disorders"[Mesh] OR "Craniocerebral Trauma"[Mesh]))) AND (((("nutritional support"[MeSH Terms] OR Nutritional Support[tiab])) OR (((enteral[Title/Abstract] OR parenteral[Title/Abstract] OR entric[Title/Abstract] OR tube[Title/Abstract])) AND (feed*[Title/Abstract] OR nutrition*[Title/Abstract]))) AND (((("Guideline"[Publication Type] OR "Guidelines as Topic"[Mesh])) OR ((Guideline*[Text Word] OR practice guideline*[Text Word] OR clinical guideline*[Text Word] OR guidance[Text Word] OR consensus[Text Word] OR recommendation*[Text Word]))) AND (("2008/01/01"[PDat] : "2018/12/31"[PDat]) AND (Danish[lang] OR English[lang] OR Norwegian[lang] OR Swedish[lang]))) Filters: Publication date from 2008/01/01 to 2018/12/31; Danish; English; Norwegian; Swedish</p>	84
#3	Add	<p>Search (((((((((head[Text Word] OR crania*[Text Word] OR cranio*[Text Word] OR cerebr*[Text Word] OR capitis[Text Word] OR brain*[Text Word] OR forebrain*[Text Word] OR skull*[Text Word] OR hemispher*[Text Word] OR intra-cran*[Text Word] OR inter-cran*[Text Word]))) AND ((injur*[Title/Abstract] OR trauma*[Title/Abstract] OR lesion*[Title/Abstract] OR damag*[Title/Abstract] OR wound*[Title/Abstract] OR destruction*[Title/Abstract] OR oedema*[Title/Abstract] OR edema*[Title/Abstract] OR fracture*[Title/Abstract] OR contusion*[Title/Abstract] OR concus*[Title/Abstract] OR commotion*[Title/Abstract] OR pressur*[Title/Abstract]))) AND (((((((((apoplexy[tw] OR stroke[tiab] OR Diffuse axonal injur*[tiab] OR "Unconsciousness"[Mesh] OR "Glasgow Outcome Scale"[Mesh] OR "Glasgow Coma Scale"[Mesh] OR "Brain Edema"[Mesh] OR "Cerebrovascular Disorders"[Mesh] OR "Craniocerebral Trauma"[Mesh]))) AND (((("nutritional support"[MeSH Terms] OR Nutritional Support[tiab])) OR (((enteral[Title/Abstract] OR parenteral[Title/Abstract] OR entric[Title/Abstract] OR tube[Title/Abstract])) AND (feed*[Title/Abstract] OR nutrition*[Title/Abstract])))</p>	2709
#2	Add	<p>Search ((("nutritional support"[MeSH Terms] OR Nutritional Support[tiab])) OR (((enteral[Title/Abstract] OR parenteral[Title/Abstract] OR entric[Title/Abstract] OR tube[Title/Abstract])) AND (feed*[Title/Abstract] OR nutrition*[Title/Abstract]))</p>	61555
#1	Add	<p>Search (((((((((head[Text Word] OR crania*[Text Word] OR cranio*[Text Word] OR cerebr*[Text Word] OR capitis[Text Word] OR brain*[Text Word] OR forebrain*[Text Word] OR skull*[Text Word] OR hemispher*[Text Word] OR</p>	899107

Search	Add to builder	Query	Items found
		intra-cran*[Text Word] OR inter-cran*[Text Word])) AND ((injur*[Title/Abstract] OR trauma*[Title/Abstract] OR lesion*[Title/Abstract] OR damag*[Title/Abstract] OR wound*[Title/Abstract] OR destruction*[Title/Abstract] OR oedema*[Title/Abstract] OR edema*[Title/Abstract] OR fracture*[Title/Abstract] OR contusion*[Title/Abstract] OR concus*[Title/Abstract] OR commotion*[Title/Abstract] OR pressur*[Title/Abstract])))) OR (((((((((apoplexy[tw]) OR stroke[tiab]) OR Diffuse axonal injur*[tiab]) OR "Unconsciousness"[Mesh]) OR "Glasgow Outcome Scale"[Mesh]) OR "Glasgow Coma Scale"[Mesh]) OR "Brain Edema"[Mesh]) OR "Cerebrovascular Disorders"[Mesh]) OR "Craniocerebral Trauma"[Mesh])	

Søgeprotokol NKR P7: Ernæring til patienter med akut erhvervet hjerneskade

Projekttitlel	Ernæringsbehandling til voksne patienter med svær erhvervet hjerneskade. Systematiske reviews og primærlitteratur
Kontakt projektgruppe:	Sasja Håkonson Mail: sjh@cfkr.info
Kontakt søgekonsulent:	Conni Skrubbeltrang Mail: cs@rn.dk
Senest opdateret	06.12.2018

Søgetermer	Se søgehistorikken under hver base
Inklusions- og eksklusionskriterier	Sprog: Engelsk, dansk, norsk og svensk År: 2008-2018 Publikationstyper: Systematiske Reviews, RCT og observationelle studier

Pico 1 og 3

Database	Interface	Resultat	Dato
PubMed	Pubmed.gov	430	31.05.2018
Embase	Embase.com	735	04.06.2018
Cinahl	Ebsco	165	05.06.2018

PubMed

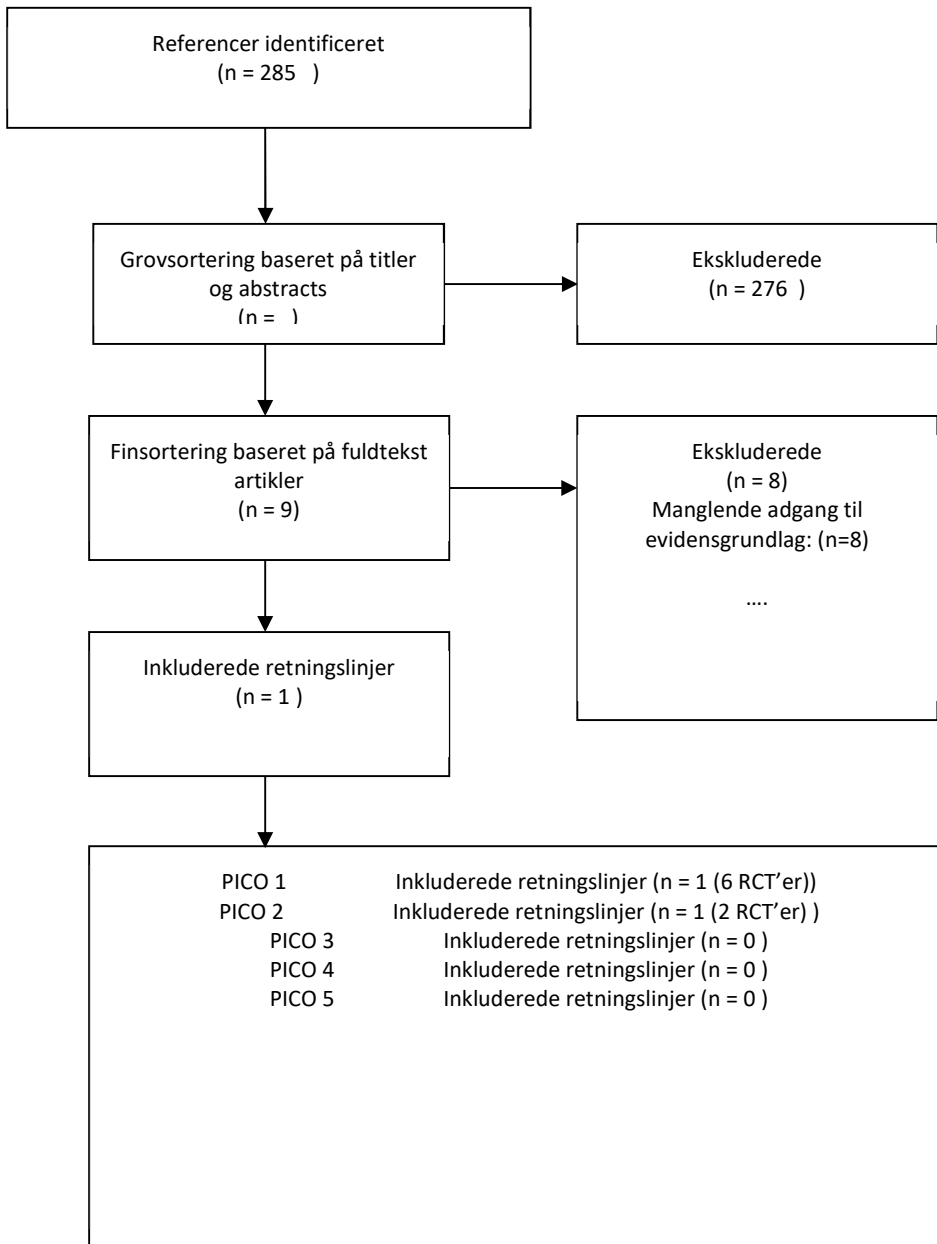
Search	Add to builder	Query	Items found
#30	Add	Search (((((((("Controlled Clinical Trial"[Publication Type] OR "Controlled Clinical Trials as Topic"[Mesh])) OR (((random*[Text Word] OR controlled[Text Word] OR crossover[Text Word] OR cross-over[Text Word] OR blind*[Text Word] OR mask*[Text Word])) AND (trial OR trials OR study OR studies OR analyz*)) OR rct[Text Word] OR (((singl*[Text Word] OR doubl*[Text Word] OR tripl*[Text Word])) AND (blind[Text Word] OR mask[Text Word])))) OR placebo[Text Word])) OR systematic[sb]) OR ("Epidemiologic Studies"[Mesh]) OR (((("Comparative Study"[Publication Type]) OR ("Evaluation Studies"[Publication Type] OR "Evaluation Studies as Topic"[Mesh]) OR ("Multicenter Studies as Topic"[Mesh] OR "Multicenter Study"[Publication Type])) OR ("Observational Studies as Topic"[Mesh] OR "Observational Study"[Publication Type])) OR ("Validation Studies"[Publication Type] OR "Validation Studies as Topic"[Mesh])) OR (((Epidemiologic[Text Word] OR cohort*[Text Word] OR perspective[Text Word] OR prospective[Text Word] OR longitud*[Text Word] OR follow-up[Text Word] OR follow up[Text Word] OR followup[Text Word] OR retro-spective[Text Word] OR retrospective[Text Word] OR case-control*[Text Word] OR case control*[Text Word] OR observational[Text Word] OR cross-section*[Text Word] OR cross section*[Text Word] OR multi-cent*[Text Word] OR multicent*[Text Word] OR evaluation[Text Word] OR comparative[Text Word] OR intervention[Text Word] OR provoca*[Text Word] OR validation[Text Word])) AND (study[Text Word] OR studies[Text Word] OR trial*[Text Word] OR analys*[Text Word]))) AND (((("nutritional support"[MeSH	430

Search	Add to builder	Query	Items found
		<p>Terms] OR Nutritional Support[tiab])) OR (((enteral[Title/Abstract] OR parenteral[Title/Abstract] OR entric[Title/Abstract] OR tube[Title/Abstract])) AND (feed*[Title/Abstract] OR nutrition*[Title/Abstract]))) AND ((((((head[Text Word] OR crania*[Text Word] OR cranio*[Text Word] OR cerebr*[Text Word] OR capitis[Text Word] OR brain*[Text Word] OR forebrain*[Text Word] OR skull*[Text Word] OR hemispher*[Text Word] OR intra-cran*[Text Word] OR inter-cran*[Text Word]))) AND ((injur*[Title/Abstract] OR trauma*[Title/Abstract] OR lesion*[Title/Abstract] OR damag*[Title/Abstract] OR wound*[Title/Abstract] OR destruction*[Title/Abstract] OR oedema*[Title/Abstract] OR edema*[Title/Abstract] OR fracture*[Title/Abstract] OR contusion*[Title/Abstract] OR concus*[Title/Abstract] OR commotion*[Title/Abstract] OR pressur*[Title/Abstract]))) OR (((((((apoplexy[tw] OR stroke[tiab] OR Diffuse axonal injur*[tiab] OR "Unconsciousness"[Mesh] OR "Glasgow Outcome Scale"[Mesh] OR "Glasgow Coma Scale"[Mesh] OR "Brain Edema"[Mesh] OR "Cerebrovascular Disorders"[Mesh] OR "Craniocerebral Trauma"[Mesh]))) Filters: Publication date from 2008/01/01 to 2018/12/31; Danish; English; Norwegian; Swedish</p>	
#28	Add	<p>Search (((((((("Controlled Clinical Trial"[Publication Type] OR "Controlled Clinical Trials as Topic"[Mesh])) OR (((random*[Text Word] OR controlled[Text Word] OR crossover[Text Word] OR cross-over[Text Word] OR blind*[Text Word] OR mask*[Text Word])) AND (trial OR trials OR study OR studies OR analyz*)) OR rct[Text Word] OR ((sing*[Text Word] OR doubl*[Text Word] OR tripl*[Text Word])) AND (blind[Text Word] OR mask[Text Word]))) OR placebo[Text Word])) OR systematic[sb] OR ("Epidemiologic Studies"[Mesh] OR (((((((("Comparative Study"[Publication Type] OR "Evaluation Studies"[Publication Type] OR "Evaluation Studies as Topic"[Mesh]) OR ("Multicenter Studies as Topic"[Mesh] OR "Multicenter Study"[Publication Type])) OR ("Observational Studies as Topic"[Mesh] OR "Observational Study"[Publication Type])) OR ("Validation Studies"[Publication Type] OR "Validation Studies as Topic"[Mesh]))) OR (((Epidemiologic[Text Word] OR cohort*[Text Word] OR perspective[Text Word] OR prospective[Text Word] OR longitud*[Text Word] OR follow-up[Text Word] OR follow up[Text Word] OR followup[Text Word] OR retro-spective[Text Word] OR retrospective[Text Word] OR case-control*[Text Word] OR case control*[Text Word] OR observational[Text Word] OR cross-section*[Text Word] OR cross section*[Text Word] OR multi-cent*[Text Word] OR multicent*[Text Word] OR evaluation[Text Word] OR comparative[Text Word] OR intervention[Text Word] OR provoca*[Text Word] OR validation[Text Word]))) AND (study[Text Word] OR studies[Text Word] OR trial*[Text Word] OR analys*[Text Word]))) AND (((("nutritional support"[MeSH Terms] OR Nutritional Support[tiab])) OR (((enteral[Title/Abstract] OR parenteral[Title/Abstract] OR entric[Title/Abstract] OR tube[Title/Abstract])) AND (feed*[Title/Abstract] OR nutrition*[Title/Abstract]))) AND ((((((head[Text Word] OR crania*[Text Word] OR cranio*[Text Word] OR cerebr*[Text Word] OR capitis[Text Word] OR brain*[Text Word] OR forebrain*[Text Word] OR skull*[Text Word] OR hemispher*[Text Word] OR intra-cran*[Text Word] OR inter-cran*[Text Word]))) AND ((injur*[Title/Abstract] OR trauma*[Title/Abstract] OR lesion*[Title/Abstract] OR damag*[Title/Abstract] OR wound*[Title/Abstract] OR destruction*[Title/Abstract] OR oedema*[Title/Abstract] OR edema*[Title/Abstract] OR fracture*[Title/Abstract] OR contusion*[Title/Abstract] OR concus*[Title/Abstract] OR commotion*[Title/Abstract] OR pressur*[Title/Abstract]))) OR (((((((apoplexy[tw] OR stroke[tiab] OR Diffuse axonal injur*[tiab] OR "Unconsciousness"[Mesh] OR "Glasgow Outcome Scale"[Mesh] OR "Glasgow Coma Scale"[Mesh] OR "Brain Edema"[Mesh] OR "Cerebrovascular Disorders"[Mesh] OR "Craniocerebral Trauma"[Mesh])))</p>	887
#27	Add	<p>Search (((((((("Controlled Clinical Trial"[Publication Type] OR "Controlled Clinical Trials as Topic"[Mesh])) OR (((random*[Text Word] OR controlled[Text Word] OR crossover[Text Word] OR cross-over[Text Word] OR blind*[Text Word] OR mask*[Text Word])) AND (trial OR trials OR study OR studies OR analyz*)) OR rct[Text Word] OR ((sing*[Text Word] OR doubl*[Text Word] OR tripl*[Text Word])) AND (blind[Text Word] OR mask[Text Word]))) OR placebo[Text Word])) OR systematic[sb] OR ("Epidemiologic Studies"[Mesh] OR (((((((("Comparative Study"[Publication Type] OR "Evaluation Studies"[Publication Type] OR "Evaluation Studies as Topic"[Mesh]) OR ("Multicenter Studies as Topic"[Mesh] OR "Multicenter Study"[Publication Type])) OR ("Observational Studies as Topic"[Mesh] OR "Observational Study"[Publication Type])) OR ("Validation Studies"[Publication Type] OR "Validation Studies as Topic"[Mesh]))) OR (((Epidemiologic[Text Word] OR cohort*[Text Word] OR perspective[Text Word] OR prospective[Text Word] OR longitud*[Text Word] OR</p>	6772147

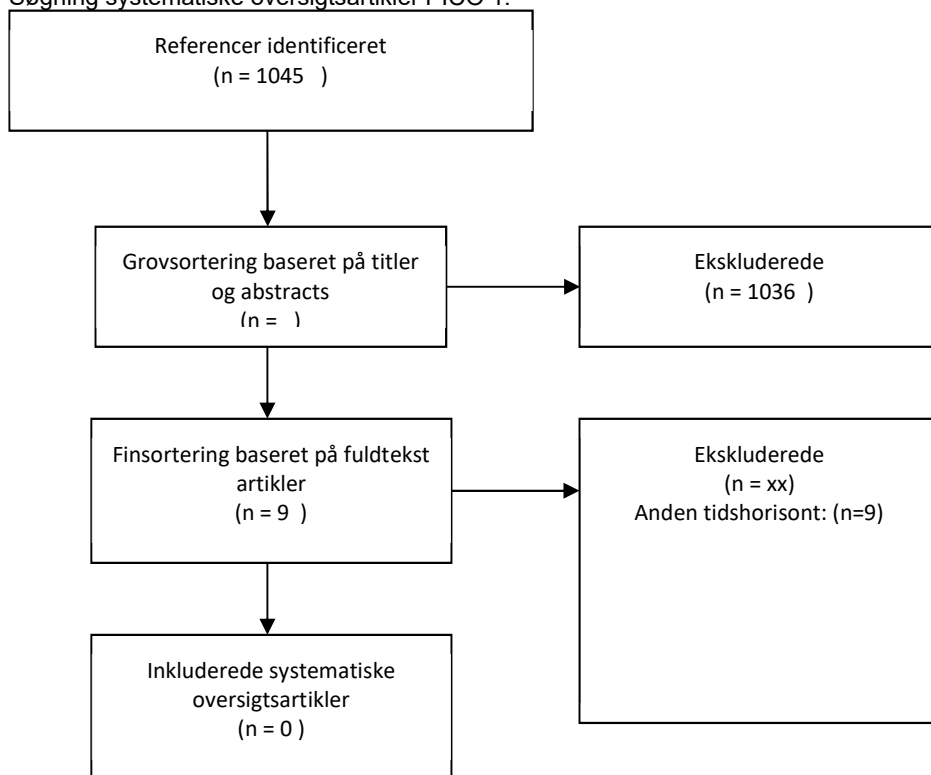
Search	Add to builder	Query	Items found
		follow-up[Text Word] OR follow up[Text Word] OR followup[Text Word] OR retrospective[Text Word] OR retrospective[Text Word] OR case-control*[Text Word] OR case control*[Text Word] OR observational[Text Word] OR cross-section*[Text Word] OR cross section*[Text Word] OR multi-cent*[Text Word] OR multicent*[Text Word] OR evaluation[Text Word] OR comparative[Text Word] OR intervention[Text Word] OR provoca*[Text Word] OR validation[Text Word])) AND (study[Text Word] OR studies[Text Word] OR trial*[Text Word] OR analys*[Text Word]))	
#26	Add	Search ("Epidemiologic Studies"[Mesh]) OR (((((((("Comparative Study"[Publication Type]) OR ("Evaluation Studies"[Publication Type] OR "Evaluation Studies as Topic"[Mesh])) OR ("Multicenter Studies as Topic"[Mesh] OR "Multicenter Study"[Publication Type])) OR ("Observational Studies as Topic"[Mesh] OR "Observational Study"[Publication Type])) OR ("Validation Studies"[Publication Type] OR "Validation Studies as Topic"[Mesh])) OR (((Epidemiologic[Text Word] OR cohort*[Text Word] OR perspective[Text Word] OR prospective[Text Word] OR longitud*[Text Word] OR follow-up[Text Word] OR follow up[Text Word] OR followup[Text Word] OR retro-spective[Text Word] OR retrospective[Text Word] OR case-control*[Text Word] OR case control*[Text Word] OR observational[Text Word] OR cross-section*[Text Word] OR cross section*[Text Word] OR multi-cent*[Text Word] OR multicent*[Text Word] OR evaluation[Text Word] OR comparative[Text Word] OR intervention[Text Word] OR provoca*[Text Word] OR validation[Text Word])) AND (study[Text Word] OR studies[Text Word] OR trial*[Text Word] OR analys*[Text Word]))	5997689
#25	Add	Search systematic[sb]	365030
#24	Add	Search (((("Controlled Clinical Trial"[Publication Type] OR "Controlled Clinical Trials as Topic"[Mesh])) OR (((random*[Text Word] OR controlled[Text Word] OR crossover[Text Word] OR cross-over[Text Word] OR blind*[Text Word] OR mask*[Text Word])) AND (trial OR trials OR study OR studies OR analyz*))) OR rct[Text Word]) OR (((singl*[Text Word] OR doubl*[Text Word] OR tripl*[Text Word])) AND (blind[Text Word] OR mask[Text Word])) OR placebo[Text Word]	1494940
#23	Add	Search (((("nutritional support"[MeSH Terms] OR Nutritional Support[tiab])) OR (((enteral[Title/Abstract] OR parenteral[Title/Abstract] OR entric[Title/Abstract] OR tube[Title/Abstract])) AND (feed*[Title/Abstract] OR nutrition*[Title/Abstract]))) AND (((((head[Text Word] OR crania*[Text Word] OR cranio*[Text Word] OR cerebr*[Text Word] OR capitis[Text Word] OR brain*[Text Word] OR forebrain*[Text Word] OR skull*[Text Word] OR hemispher*[Text Word] OR intra-cran*[Text Word] OR inter-cran*[Text Word])) AND ((injur*[Title/Abstract] OR trauma*[Title/Abstract] OR lesion*[Title/Abstract] OR damag*[Title/Abstract] OR wound*[Title/Abstract] OR destruction*[Title/Abstract] OR oedema*[Title/Abstract] OR edema*[Title/Abstract] OR fracture*[Title/Abstract] OR contusion*[Title/Abstract] OR concus*[Title/Abstract] OR commotion*[Title/Abstract] OR pressur*[Title/Abstract]))) OR (((((((apoplexy[tw] OR stroke[tiab] OR Diffuse axonal injur*[tiab]) OR "Unconsciousness"[Mesh]) OR "Glasgow Outcome Scale"[Mesh]) OR "Glasgow Coma Scale"[Mesh]) OR "Brain Edema"[Mesh]) OR "Cerebrovascular Disorders"[Mesh]) OR "Craniocerebral Trauma"[Mesh]))	2709
#22	Add	Search (("nutritional support"[MeSH Terms] OR Nutritional Support[tiab])) OR (((enteral[Title/Abstract] OR parenteral[Title/Abstract] OR entric[Title/Abstract] OR tube[Title/Abstract])) AND (feed*[Title/Abstract] OR nutrition*[Title/Abstract]))	61552
#21	Add	Search (((((head[Text Word] OR crania*[Text Word] OR cranio*[Text Word] OR cerebr*[Text Word] OR capitis[Text Word] OR brain*[Text Word] OR forebrain*[Text Word] OR skull*[Text Word] OR hemispher*[Text Word] OR intra-cran*[Text Word] OR inter-cran*[Text Word])) AND ((injur*[Title/Abstract] OR trauma*[Title/Abstract] OR lesion*[Title/Abstract] OR damag*[Title/Abstract] OR wound*[Title/Abstract] OR destruction*[Title/Abstract] OR oedema*[Title/Abstract] OR edema*[Title/Abstract] OR fracture*[Title/Abstract] OR contusion*[Title/Abstract] OR concus*[Title/Abstract] OR commotion*[Title/Abstract] OR pressur*[Title/Abstract]))) OR (((((((apoplexy[tw] OR stroke[tiab] OR Diffuse axonal injur*[tiab]) OR "Unconsciousness"[Mesh]) OR "Glasgow Outcome Scale"[Mesh]) OR "Glasgow Coma Scale"[Mesh]) OR "Brain Edema"[Mesh]) OR "Cerebrovascular Disorders"[Mesh]) OR "Craniocerebral Trauma"[Mesh]))	899107

Flowcharts.

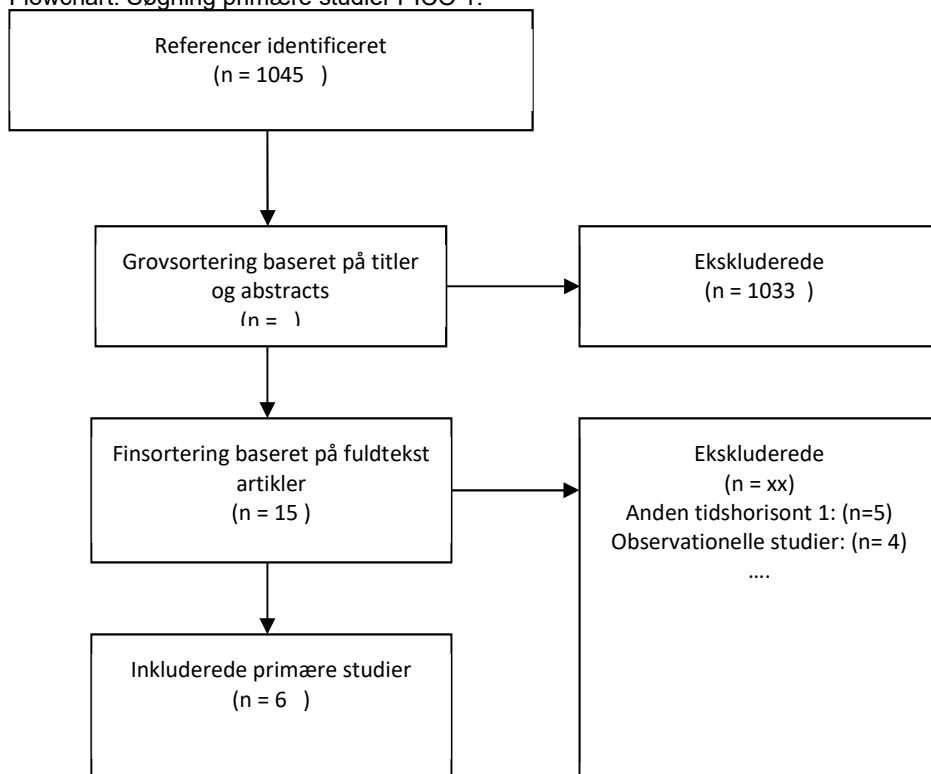
Søgning efter retningslinjer



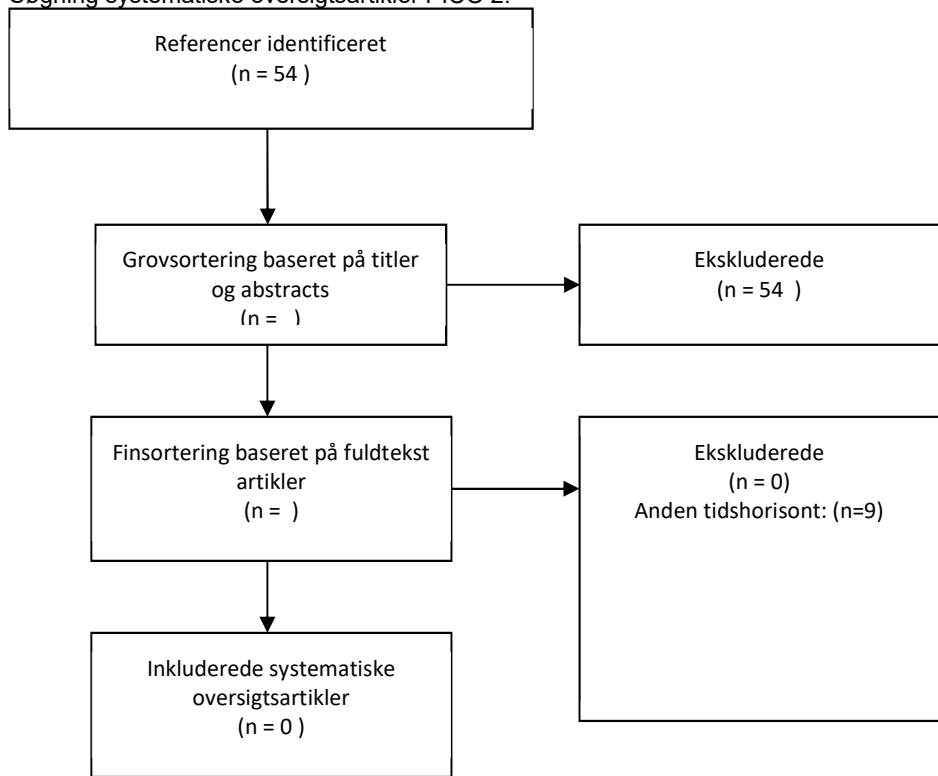
Søgning systematiske oversigtsartikler PICO 1.



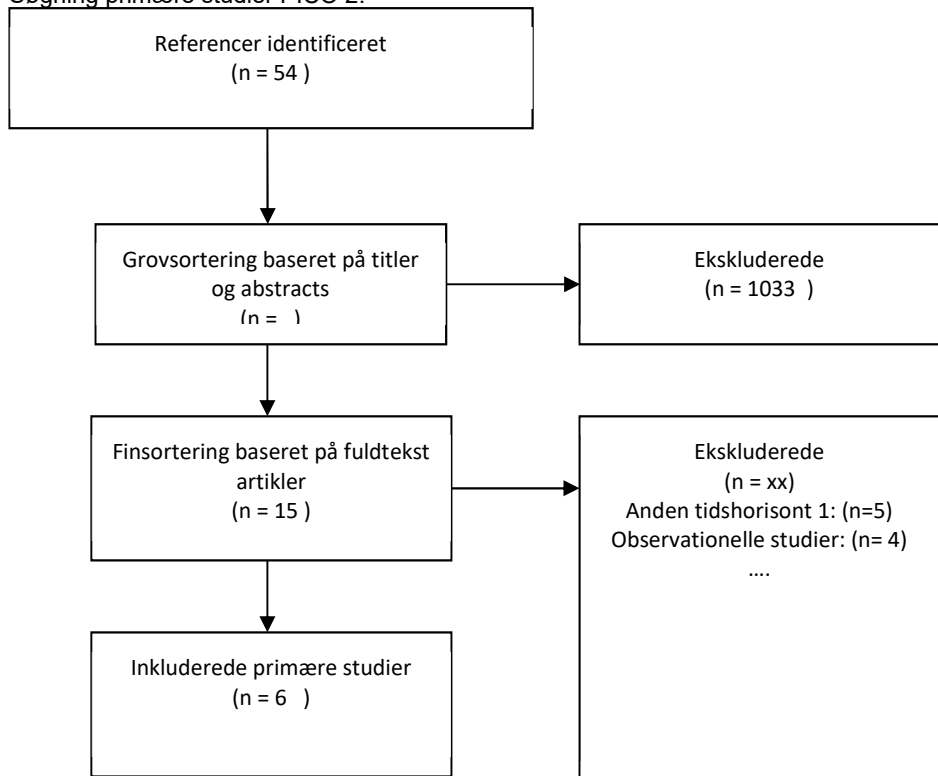
Flowchart. Søgning primære studier PICO 1.



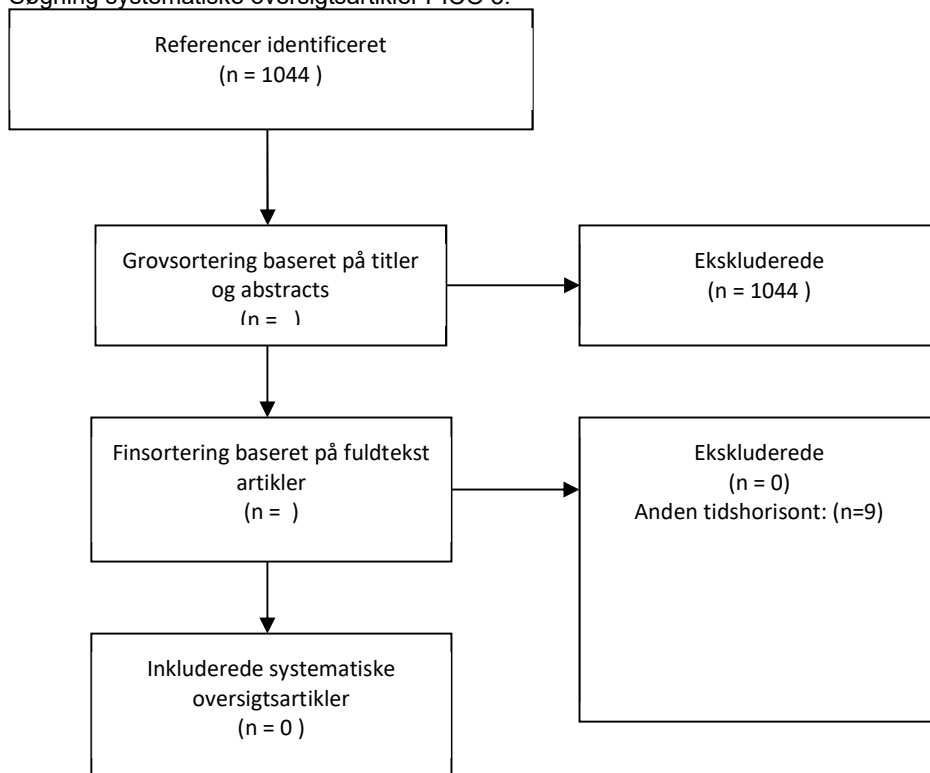
Søgning systematiske oversigtsartikler PICO 2.



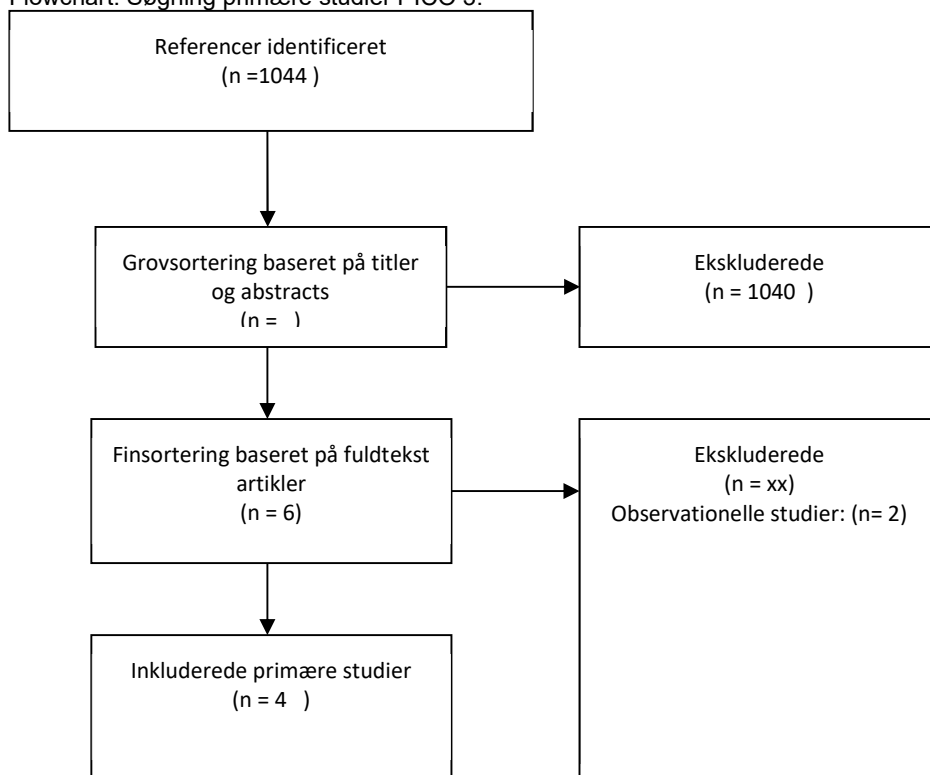
Søgning primære studier PICO 2.



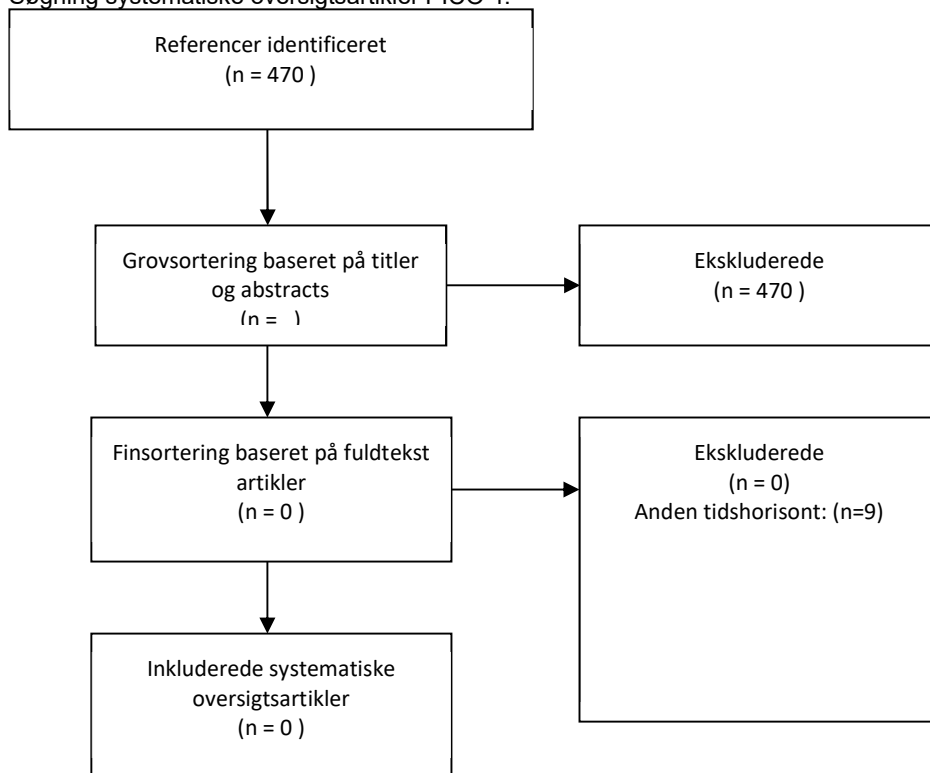
Søgning systematiske oversigtsartikler PICO 3.



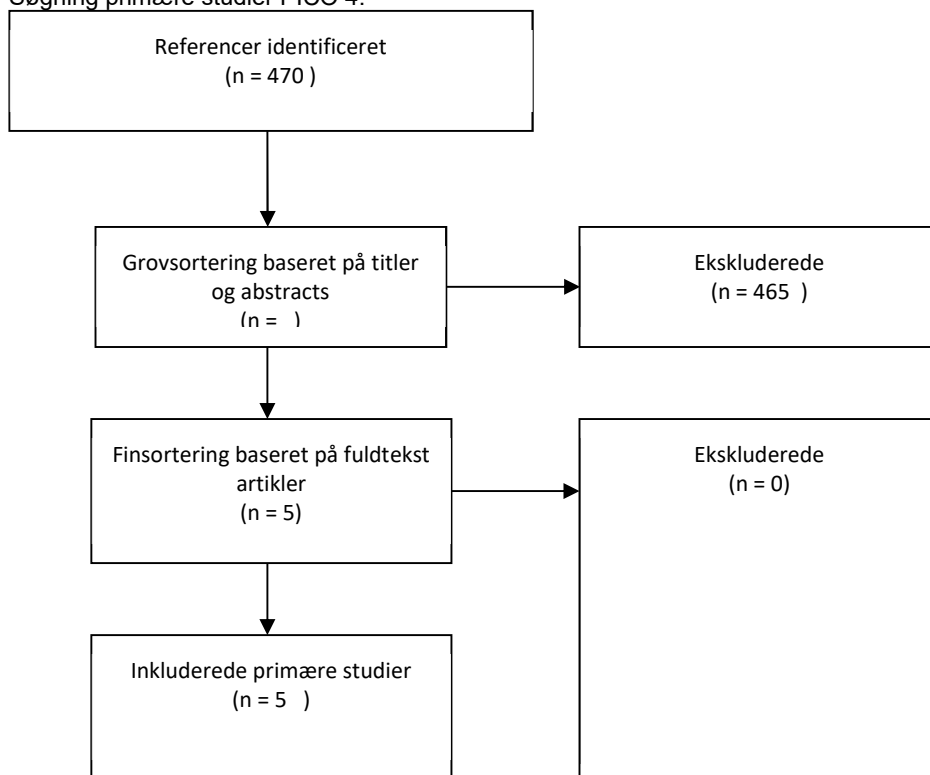
Flowchart. Søgning primære studier PICO 3.



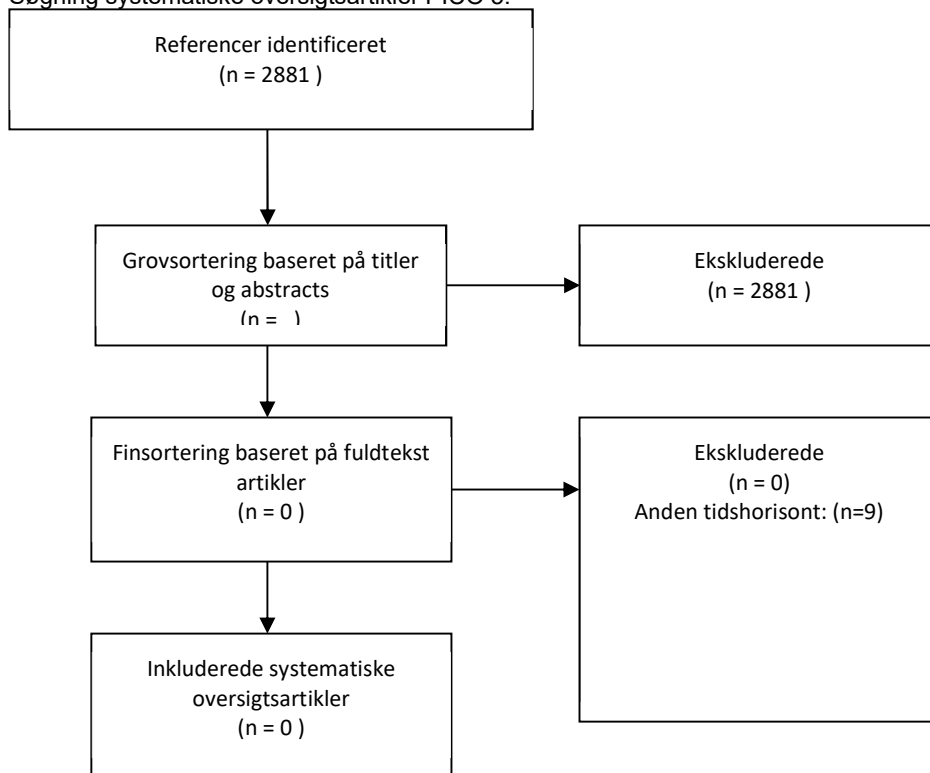
Søgning systematiske oversigtsartikler PICO 4.



Søgning primære studier PICO 4.



Søgning systematiske oversigtsartikler PICO 5.



Flowchart. Søgning primære studier PICO 5.

